



MOKAN CRS USERS GROUP

Kansas, Missouri, & Nebraska

mokan.stormsmart.org

June 2017

2017 CRS Coordinator's Manual



National Flood Insurance Program
Community Rating System
Coordinator's
Manual
FIA-232017
FEMA

It's here! The 2017 CRS Coordinator's Manual is available for download at CRSResources.org. The website will include the Manual, guidance and updated documents. [Webinars](#) for new manual topics are listed on the website and are available at no cost to the attendee.

June 20	Preparing for a Verification Visit	October 18	Developing a CRS Program for Public Information (PPI)
June 21	Developing Outreach Projects (Activity 330)	November 14	Preparing for a Verification Visit
July 18	Changes in the 2017 CRS Coordinator's Manual	November 15	Working with Repetitive Loss Properties
July 19	CRS Class 4 Prerequisites	December 12	Introduction to the CRS
August 15	Preparing an Annual Recertification	December 13	CRS and Coastal Hazards
August 16	Flood Warning & Response (Activity 610)		
September 19	Preparing an Annual Recertification		
September 20	Floodplain Management Planning (Activity 510)		
October 17	Introduction to the CRS		

L-278, 4 day CRS Course is coming back to Kansas



Registration is open for any community in any state. This course welcomes community's interested in learning more about CRS, new CRS applicants, changes to the 2017 Manual, and communities interested in improving their CRS Class. Activities and Elements will be discussed in detail. Class will be for four full days in Wichita October 23-26, 2017. There is not fee for the course in Wichita.

The course is led by ISO and will cover the 2017 CRS Coordinator's Manual. Advanced registration is required and the State of Kansas Department of Water Resources (DWR). The CRS course requires two different registration forms to be completed. One form is for DWR. This form registers you for the class so that we know who is coming. The second form is the form ff_119_25_2_75_5a for FEMA. Bring the FEMA form to class with you and turn it in to the instructors in person. This is a field deployed class that is normally held in Maryland. The FEMA form requires a student identification (SID) number. To obtain and SID number visit the website <https://cdp.dhs.gov/FEMASID/>. Failing to fill out the form

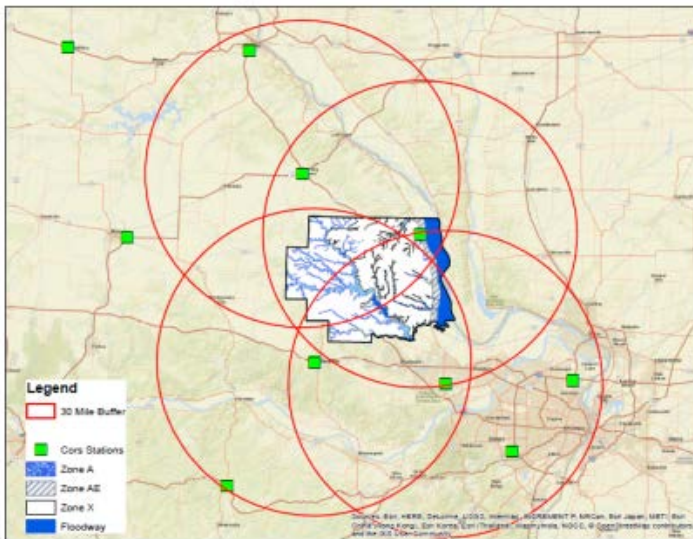
with an SID number means you will not receive continued education credits for the course.

The course had been approved for CEUs for CFMs. Registration deadline is August 23rd and additional location information will be sent at a later date. Additional information and forms are attached.

Steve Samuelson, NFIP Specialist, CFM
Kansas Department of Agriculture
Division of Water Resources/Floodplain Management
p. (785)-296-4622 | steve.samuelson@ks.gov

440 BMM with CORs Stations

Lincoln County, MO - Cors Stations with 30 Mile Buffer 4-14-17



The NGS manages a network of Continuously Operating Reference Stations (CORS) that provide Global Navigation Satellite System data in support of three-dimensional positioning and geophysical applications throughout the United States.

Surveyors, GIS users, engineers, scientists, and others who collect GPS data can use CORS data to improve the precision of their positions. CORS-enhanced, post-processed coordinates are accurate to within a few centimeters relative to NSRS coordinates, both horizontally and vertically.

The CORS sites are independently owned and operated. Each agency shares its data with the NGS, and the NGS in turn analyzes and distributes the data free of charge. As of Flood Data Maintenance, the CORS network contained over 1,800 stations, contributed by over 200 different organizations, and the network continues to expand.

Having at least three CORS within 30 miles enables surveyors with portable GPS station to obtain elevations

accurate enough for FEMA Elevation Certificates in near-real time.

For CRS credit, up to 27 points 440 BMM is possible by utilizing the CORs stations if there are at **least 3 within 30 miles of the community**. There is an impact adjustment based off the total SFHA acreage covered by the CORs stations. For credit you must provide a map showing the location of the CORs stations, your floodplain shown, a 30 mile buffer around each station, and the total SFHA acreage that is covered within the buffers. If 100% of the SFHA is covered by those 3 CORs stations, 100% of the credit will be awarded. Reference page 440-11.

The NGS provides a current map of CORS on its website (<https://www.ngs.noaa.gov/CORS/>). This map provides the distance to the three nearest CORS from any point on the map. A community can use this map to see if it qualifies for BMM credit.

To create a CORS map you will need to do the following steps:

1. Enter your location at the www.ngs.noaa.gov/CORS/
2. Download and save the CORS KMZ file
3. Open the KMZ file in Google Earth
4. Right click on the KMZ file and save as a KML file
5. Open your existing Floodplain Map in ArcMap
6. Open ArcToolBox
7. Open the Conversion Tool/From KML start KML To Layer
8. Input the KML file you have saved, select your output location, and name your output
9. Click Ok. A new layer will be added to your ArcMap
10. Right click on the file to and export the data as a shapefile.
11. Name and save the file
12. Click the Edit tool
13. Click the CORS you want the buffer around
14. Open the ArcToolBox
15. Open the Buffer Panel under Analysis Tools – Proximity
16. Input the CORS you selected
17. Change the Distance to 30 Miles
18. Click Ok and a ring will be placed around the selected CORS
19. Change the format of the ring and the CORS to your preference

Emma Epplin-Birdsell, MPH
Emergency Management Director
Lincoln County Emergency Management & Floodplain Administration
EMD@lcmoema.com

Mo-Kan Regional Council, Missouri



The service area of [Mo-Kan Regional Council](#), headquartered in St. Joseph, Missouri, consists of Andrew, Buchanan, Clinton, and DeKalb Counties in Missouri and Atchison and Doniphan Counties in Kansas. As a regional council of government, Mo-Kan's function is to pool resources from state and federal governments, providing professional services for the communities they represent. Exploring the Community Rating System is therefore a great opportunity to impact the surrounding area.

Through Community Development Block Grant (CDBG) funding for disaster resiliency, Mo-Kan began to explore the CRS. Initial research of the program included several conversations with CRS Specialist, Melissa Mitchell, and a brief visit to Gale Cantu at Platte County, Missouri. As a county with a rating of five, Platte County had thorough documentation of all processes. They shared their experience, including benefits and simple actions that could be documented to achieve points.

Although the CRS offers many potential benefits and savings, it carries a certain time commitment that some communities are hesitant to accept. The question: is it possible for regional planning commissions to assist communities in the CRS process? The Missouri Association of Councils of Government (MACOG) is interested to learn the answer. After all, Mo-Kan and other councils of government possess several tools that allow them to efficiently navigate such projects, including:

- Experienced staff and resources made available for the communities in need.
- Existing knowledge of federal and state programs that allow for seamless integration of new community projects.
- Relationships with other communities in the region; can assist communities to work with one another to achieve one common goal.

With this concept in place, Mo-Kan approached Buchanan County, Missouri about utilizing the program for the benefit of the community. Upon learning the value of the CRS program, both financially and through public safety, Buchanan County gave Mo-Kan the green light to begin the CRS journey on their behalf. Currently, Mo-Kan Planner, Tanner Stark, and Buchanan County Emergency Management Director (EMD), Bill Brinton, are awaiting

training courses at the Emergency Management Institute (EMI) in Emmitsburg, Maryland.

As Mo-Kan moves forward with the implementation of the CRS at Buchanan County, MACOG will continue to monitor the progress to determine the effectiveness of the program. The long-term goal is to make the CRS process more navigable for other regional planning commissions and the communities they serve.

Tanner Stark, Community Development Planner

Mo-Kan Regional Council

p. (816) 233-3144 | tanner@mo-kan.org
www.mo-kan.org

CRS Specialist for AR, IA, KS, MO, MN, and NE

If you would like additional information about joining the CRS program or improving with in the program, please do not hesitate to contact me.

Melissa Mitchell, CFM

ISO/CRS Specialist for KS, MO, MN, AR, NE, IA
p. (913) 543-0632 | mmitchell@iso.com

Building Code Effectiveness Grading Schedule

If you are interested in learning more about the [BCEGS](#) process, or to request a BCEGS meeting or presentation for your code organization, please contact:

Randolph Finkle, CBO

Field Representative, BCEGS

p. (660) 424-3685 | rfinkle@verisk.com

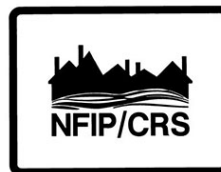
Join MOKAN CRS Users Group

If you are interested in submitting an article for the newsletter or hosting a training session related to a CRS topic, please contact Jonathan. We are always looking for article contributions and community's to have in the CRS Spotlight for their CRS efforts.

Jonathan Wiles, CET, CFM

p. (913) 742-6292 | jwiles@cityofshawnee.org

CRS Communities –May 1st Publication List



Congratulations to our communities who joined the program or had a class improvement. The [May 2017 publication list](#) is available online.

This City of Coralville, Iowa has a nice CRS article in the [NFIP newsletter](#). If you are not receiving the NFIP newsletter, you can subscribe at https://service.govdelivery.com/accounts/USDHSFEMA/subscribe/new?topic_id=USDHSFEMA_46.

CRS Resources

[FEMA National Flood Insurance Program Community Rating System](#)

[CRS Resources](#)

[NFIP FloodSmart.gov](#)

[MOKAN CRS Users Group](#)

[NFIP/CRS Newsletter](#)

NFIP Coordinator Contact

If your community is interested in making application for Community Rating System (CRS) you must first complete a Community Assurances Visit (CAV). To request a CAV, a letter of interest is sent to FEMA Region. CAV questions can be answered by your State NFIP Coordinator:

Tom Morey, R.S., CFM, NFIP Coordinator

Kansas Department of Agriculture
Division of Water Resources
p. (785) 296-5440 | Tom.morey@kda.ks.gov

Karen McHugh, CFM

Missouri State Emergency Management Agency
p. (573) 526-9129 | karen.mchugh@sema.dps.mo.gov

Mitch Paine, CFM

Floodplain Management, Nebraska Department of Natural Resources
p. (402) 471-9252 | Mitch.Paine@nebraska.gov

Bill Cappuccio, State NFIP Coordinator, Iowa

p. (515) 725-8342 | Bill.Cappuccio@dnr.iowa.gov

Whit Montague, State CRS Coordinator

Arkansas Natural Resources Commission
p. (501) 682-1853 | Whitney.Montague@arkansas.gov

Floodplain Management Associations & State DNR Training Opportunities

All states have a floodplain/stormwater association and many DNR offices offer training opportunities. Here are website links for you to follow:

Arkansas

<https://www.arkansasfloods.org/afma/>
<http://anrc.ark.org/divisions/water-resources-management/flood-insurance/>

Iowa

<http://www.iowafloods.org/>
<http://www.iowadnr.gov/>

Kansas

<http://www.kafm.org/>
<https://agriculture.ks.gov/divisions-programs/dwr/floodplain/NFIP>

Missouri

<http://www.mfsma.org/coursesworkshops.html>
<http://sema.dps.mo.gov/programs/floodplain/>

Nebraska

<http://www.nefsma.com/>
<http://www.dnr.ne.gov/fpm/NFIP>

Additional Training Opportunities

- [CRS Resources – Webinars](#)
- [Association of State Floodplain Managers](#)
- [H2O Partners - webinars](#)

Activity Point of Contact

We have asked MOKAN communities to be the point of contact for specific CRS sections/activities. Please do not hesitate to contact them with any questions that you may have in regards to CRS support by activity. If you are interested in supporting an activity, please let us know and we will add you to the contact list.

CRS Activity	Contact	Email
310	City of Overland Park Pam Fortun, P.E. CFM (913) 895-6054	Pam.Fortun@opkansas.org
330	City of Lawrence Amy Miller, AICP, CFM (785) 832-3166	amiller@lawrenceks.org
340	Dale Schmutzler, CFM, MO State NFIP Coordinator (573) 526-9135	Dale.schmutzler@sema.dps.mo.gov
350	City of Lenexa Tom Jacobs, P.E., CFM (913) 477-7644	tjacobs@lenexa.com
360	City of St. Charles, MO Ellie Marr (636) 949-7900 x7235	EMarr@sccmo.org
370	FEMA Region VII Andy McGrail, CFM 816-283-7982	andy.mcgrail@fema.dhs.gov
410	City of Shawnee Jonathan Wiles, CET (913) 742-6292	jwiles@cityofshawnee.org
420	City of Lenexa Tom Jacobs, P.E., CFM (913) 477-7644	tjacobs@lenexa.com
430	Platte County, Mo Gale Cantu, C.B.I. (816) 858-3380	GCANTU@co.platte.mo.us
440	Kansas DWR Dane Bailey (785) 296-7769	Dane.Bailey@KDA.KS.GOV
450	City of Shawnee Jonathan Wiles, CET (913) 742-6292	jwiles@cityofshawnee.org
510	City of Shawnee Jonathan Wiles, CET (913) 742-6292	jwiles@cityofshawnee.org

520	Platte County, MO Gale Cantu, C.B.I. (816) 858-3380	GCANTU@co.platte.mo.us
530	City of St. Charles, MO Ellie Marr (636) 949-7900 x7235	EMarr@sccmo.org
540	City of Lawrence Matt Bond, P.E., CFM (785) 832-3142	mbond@lawrenceks.org
610	City of Overland Park Pam Fortun, P.E. CFM (913) 895-6054	Pam.Fortun@opkansas.org
620	Ben Higgins, City of Lincoln (402) 441 – 7589	watershed@lincoln.ne.gov
630	Contact your State Dam Safety Coordinator for element SDS	