

# MOKAN CRS USERS GROUP

Kansas, Missouri, & Nebraska

[mokan.stormsmart.org](http://mokan.stormsmart.org)

## December 2015

### MOKAN CRS Users Group

As we close out another successful year, we want to say THANK YOU to everyone who participates and contributes to MOKAN. It is our goal to continue to release newsletters, offer training opportunities, to be available to support and assist our CRS communities, and those interested in the program. We will continue to host Arkansas with MOKAN as they develop their users group. If you would like to join the MOKAN team, please contact Jonathan.

**Jonathan Wiles, CET, CFM**

p. (913) 742-6292 | [jwiles@cityofshawnee.org](mailto:jwiles@cityofshawnee.org)

### 25<sup>th</sup> Anniversary of CRS



This past year, 2015 marked the 25<sup>th</sup> anniversary of the [Community Rating System](#). In 1990, the program launched, processing the first applications. In 1991, the first discounts went effective with 295 participating jurisdictions and has grown to over 1300. The

communities listed below have been with CRS since 1991 based off the October 1, 2015 publication list.

#### Arkansas

City of Arkadelphia, CRS Class 8  
City of Little Rock, CRS Class 7

#### Iowa

City of Des Moines, CRS Class 7

#### Kansas

City of Shawnee, CRS Class 7

#### Missouri

City of Independence, CRS Class 7

#### Nebraska

City of Fremont, CRS Class 9  
City of Lincoln, CRS Class 5

Congratulations to our communities who joined the program in 2015 and to those that will be on the May 2016 [publication list](#)! 2015 included 4 new Kansas communities: City of Florence, Jefferson County, City of Newton, and Riley County.

### Community Spotlight – City of Fayetteville, Arkansas



During my time as a certified floodplain manager, I have been interested in getting the communities I work for

involved in the Community Rating System. However, it can be somewhat daunting when reviewing the CRS manual and trying to determine exactly which activities to pursue, what is required for that activity and how many points may be available to the City. This could certainly dissuade some communities from participating as they may feel the application process or annual obligations may be too time consuming. For our current CRS goals, I found this not to be the case. With help from our ISO/CRS Specialist and the Arkansas Natural Resources Commission, we were able to identify our goals, how they may be achieved and most importantly how the program can be maintained year to year given the funding and staff time available. I found the literature regarding the quick points that was provided by our ISO/CRS Specialist especially helpful in identifying the activities for which we may already qualify, but were not taking advantage of by participating in the program. With the help from our ISO/CRS Specialist we were also able to identify activities in which we were not interested in pursuing at this time. This drastically reduced the time and effort required to go through the CRS manual by allowing us to focus on certain areas for which we knew we were interested.

The application process for us seemed very fast, however, this was in part due to our desire to have the program in place so that residents could begin seeing discounts on their flood policies as early as May 2016. During the application process we were able to call on staff members from engineering, GIS, building safety, planning and

administration to help determine which activities best suited our needs and have those activities scored. I estimate it was 30-45 days from our initial meeting when we first discussed the City's goals until the application was complete. As it turned out, we were able to obtain enough points to be rated as a Class 9 without much revision to the current regulatory and permitting requirements. Although Fayetteville has goals beyond Class 9, this allowed Fayetteville to enter the program so that our residents could begin seeing a benefit while activities that take longer to score could be evaluated in the upcoming months.

While there were modifications to our current program in order to participate in the program and achieve our current class, they were minimal in our case. Items such as annual mailings to repetitive loss areas, more detailed logs of information provided to residents and annual notifications to the real estate community should not add significantly to staff time or costs while helping to educate those individuals on the NFIP program and the risks associated with properties within the City. The creation of the mailers and other documents was also simplified by the multiple example documents provided by ISO. While we will plan to improve on these documents over time, it was important to have something in place quickly to meet our time frame.

In short, I feel the most important step for Fayetteville was to identify our CRS goals while ensuring those goals can be maintained annually. In my opinion, it is important to achieve the highest class each community feels is sustainable given its budgets and staffing levels. Communities and citizens are not capitalizing on the greatest benefits by entering the program in an unsustainable class and losing discounts or being suspended from the program shortly after entering. With guidance from ISO, ANRC and FEMA I feel Fayetteville has chosen a sustainable path and we will continue to evaluate opportunities for improvement in our program that may help us achieve higher class ratings in the future.

**Alan Pugh, P.E., CFM**

Staff Engineer/Floodplain Administrator

p. (479) 575-8208 | [apugh@fayetteville-ar.gov](mailto:apugh@fayetteville-ar.gov)

**CRS Resources**

[FEMA National Flood Insurance Program Community Rating System](#)

[CRS Resources](#)

[NFIP FloodSmart.gov](#)

[MOKAN CRS Users Group](#)

**Notes from your ISO/CRS Specialist**

In addition to the community's annual recertification, all CRS communities are visited by their ISO/CRS Specialist on year 3 or year 5 after their verification date. CRS Classes 9-6 are visited every 5 years and Classes 5-1 are visited every 3 years. At this visit, the communities cycle under the manual in place at that time. Currently, our communities are cycling from the 2007 CRS Manual to the 2013 CRS Manual.

As CRS Coordinators review the 2013 Manual, you will notice changes in many activities from the credit criteria, documentation to support credit, and points available per element. Take advantage of the documents and checklist available at [www.CRSResources.org](http://www.CRSResources.org).

On the website, under the 200 Series tab you will find the 321 CRS Activity Checklists. Many communities will find this checklist valuable as they prepare their documents under the 2013 Manual. There are also sample documents, guidelines, and webinar opportunities listed on the website.

The updated 503 Mapping Rep Loss Areas for CRS is available under the 500 tab. This provides guidance on how to map your RL properties under the Federal Privacy Act. Remember, when FEMA or ISO provides you data on your repetitive loss parcels, this information is protected under the Privacy Act and is for the community's in house use only. Specific information such as address/parcel number and claim information is protected and should not be provided to the public. You will see the guidance encourages communities to reference RL areas vs RL parcels. Upon request, your 2015 RL data is available with FEMA.

FEMA's [National Flood Insurance Program Elevation Certificate and Instructions](#) have not been updated with the new OMB date yet. For the time being, continue to use the most recent Elevation Certificate and Instructions form on FEMA's website. This is the [link](#) to direct your property owners and professionals too. We anticipate a webinar from [H2O Partners](#) on Elevation Certificates when the new form is approved.

To not duplicate information, read the BCEGS update on how BCEGS ratings are now part of FEMA's PDM Grant Program below.

**Melissa Mitchell, CFM**

ISO/CRS Specialist for KS, MO, MN, AR, NE, IA

p. (913) 543-0632 | [mmitchell@iso.com](mailto:mmitchell@iso.com)

## Building Code Effectiveness Grading Schedule

Participation in the Building Code Effectiveness Grading Schedule (BCEGS) coordinates with CRS in Activity 200 prerequisites per CRS Class and Activity 430 BC. For example, a CRS Class 6 community is required to have a BCEGS rating of 5/5 or better as a program prerequisite. Credit is awarded for communities in Activity 430 BC for BCEGS participation; reference element BC2 starting on page 430-25 of the CRS Manual. Community is awarded credit for building code adoptions for versions within 6 years of the most recent series I-Codes; reference BC1 on page 430-28.

In 2015, BCEGS ratings were incorporated into FEMA's Pre-Disaster Mitigation (PDM) Grant Program. The FEMA Fact Sheet on PDM states FEMA will prioritize planning and project activities in the order by communities with the highest assessed Building Code Effectiveness Grading Schedule rating from a grade or 1 to 10. If necessary, FEMA will further prioritize projects by the highest FEMA-validated Benefit Cost Ratio.

We talk often about how CRS is a joint effort from multiple departments. The update to the PDM grant program is another example of shared benefits from the CRS/BCEGS programs. Attached is a document that explains the BCEGS rating program and the charts below demonstrate BCEGS participation per state.

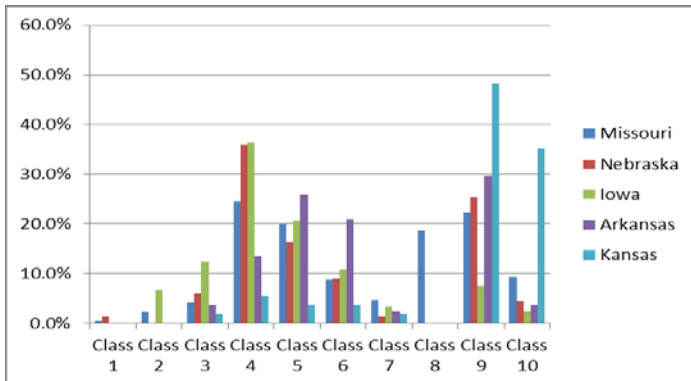


Figure 1: Cumulative BCEGS Classifications - Commercial Lines

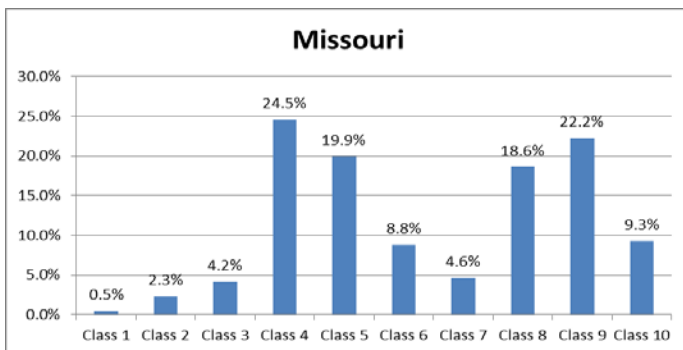


Figure 2: BCEGS Classifications - Missouri - Commercial Lines

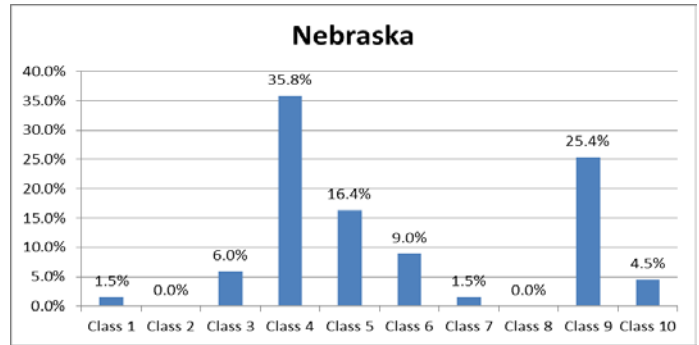


Figure 3: BCEGS Classifications - Nebraska - Commercial Lines

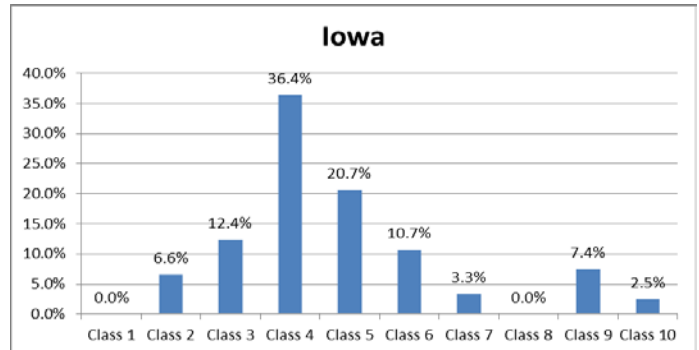


Figure 4: BCEGS Classifications - Iowa - Commercial Lines

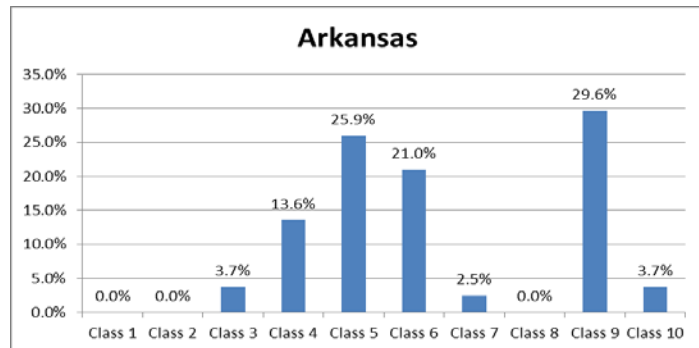


Figure 5: BCEGS Classifications - Arkansas - Commercial Lines

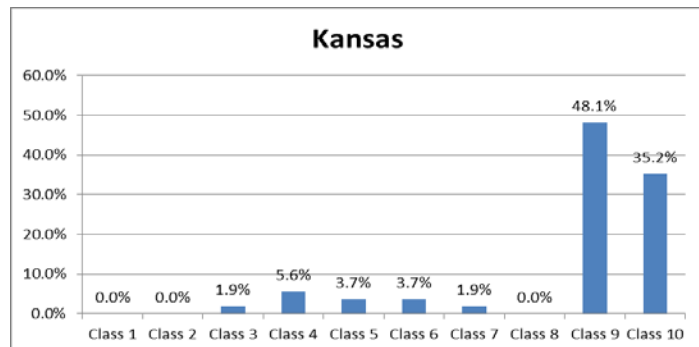


Figure 6: BCEGS Classifications - Kansas - Commercial Lines

If you are interested in learning more about the [BCEGS](#) process, or to request a BCEGS meeting or presentation for your code organization, please contact:

**Dale K. Thomure, CBO, CFM**  
 Manager Community Hazard Mitigation, BCEGS  
 p. (573)760-0350 | [dthomure@iso.com](mailto:dthomure@iso.com)

## NFIP Coordinator Contact

If your community is interesting in making application for Community Rating System (CRS) you must first complete a Community Assurances Visit (CAV). To request a CAV, a letter of interest is sent to FEMA Region. CAV questions can be answered by your State NFIP Coordinator:

### Tom Morey, R.S., CFM, NFIP Coordinator

Kansas Department of Agriculture  
Division of Water Resources  
p. (785) 296-5440 | [Tom.morey@kda.ks.gov](mailto:Tom.morey@kda.ks.gov)

### Dale Schmutzler, CFM

Missouri State Emergency Management Agency  
p. (573) 526-9135 | [Dale.schmutzler@sema.dps.mo.gov](mailto:Dale.schmutzler@sema.dps.mo.gov)

### Mitch Paine, CFM

Floodplain Management, Nebraska Department of Natural Resources  
p. (402) 471-9252 | [Mitch.Paine@nebraska.gov](mailto:Mitch.Paine@nebraska.gov)

### Bill Cappuccio, State NFIP Coordinator, Iowa

p. (515) 725-8342 | [Bill.Cappuccio@dnr.iowa.gov](mailto:Bill.Cappuccio@dnr.iowa.gov)

### Tim Dreher, State CRS Coordinator

Arkansas Natural Resources Commission  
(501) 682-1853 | [Timothy.dreher@arkansas.gov](mailto:Timothy.dreher@arkansas.gov)

## Floodplain Management Associations & State DNR Training Opportunities

All states have a floodplain/stormwater association and many DNR offices offer training opportunities. Here are website links for you to follow:

### Arkansas

<https://www.arkansasfloods.org/afma/>  
<http://anrc.ark.org/divisions/water-resources-management/flood-insurance/>

### Iowa

<http://www.iowafloods.org/>  
<http://www.iowadnr.gov/>

### Kansas

<http://www.kafm.org/>  
<https://agriculture.ks.gov/divisions-programs/dwr/floodplain/NFIP>

### Missouri

<http://www.mfsma.org/coursesworkshops.html>  
<http://sema.dps.mo.gov/programs/floodplain/>

### Nebraska

<http://www.nefsma.com/>  
<http://www.dnr.ne.gov/fpm/NFIP>

## Activity Point of Contact

We have asked MOKAN communities to be the point of contact for specific CRS sections/activities. Please do not hesitate to contact them with any questions that you may have in regards to CRS support by activity. If you are interested in supporting an activity, please let us know and we will add you to the contact list.

CRS Activity	Contact	Email
310	City of Overland Park Pam Fortun, P.E. CFM (913) 895-6054	<a href="mailto:Pam.Fortun@opkansas.org">Pam.Fortun@opkansas.org</a>
330	City of Lawrence Amy Miller, AICP, CFM (785) 832-3166	<a href="mailto:amiller@lawrenceks.org">amiller@lawrenceks.org</a>
340	Dale Schmutzler, CFM, MO State NFIP Coordinator (573) 526-9135	<a href="mailto:Dale.schmutzler@sema.dps.mo.gov">Dale.schmutzler@sema.dps.mo.gov</a>
350	City of Lenexa Tom Jacobs, P.E., CFM (913) 477-7644	<a href="mailto:tjacobs@lenexa.com">tjacobs@lenexa.com</a>
360	City of St. Charles, MO Ellie Marr (636) 949-7900 x7235	<a href="mailto:EMarr@sccmo.org">EMarr@sccmo.org</a>
370	FEMA Region VII Andy McGrail, CFM 816-283-7982	<a href="mailto:andy.mcgrail@fema.dhs.gov">andy.mcgrail@fema.dhs.gov</a>
410	City of Shawnee Jonathan Wiles, CET (913) 742-6292	<a href="mailto:jwiles@cityofshawnee.org">jwiles@cityofshawnee.org</a>
420	City of Lenexa Tom Jacobs, P.E., CFM (913) 477-7644	<a href="mailto:tjacobs@lenexa.com">tjacobs@lenexa.com</a>
430	Platte County, Mo Gale Cantu, C.B.I. (816) 858-3380	<a href="mailto:GCANTU@co.platte.mo.us">GCANTU@co.platte.mo.us</a>
440	Kansas DWR Dane Bailey (785) 296-7769	<a href="mailto:Dane.Bailey@KDA.KS.GOV">Dane.Bailey@KDA.KS.GOV</a>
450	City of Shawnee Jonathan Wiles, CET (913) 742-6292	<a href="mailto:jwiles@cityofshawnee.org">jwiles@cityofshawnee.org</a>
510	City of Shawnee Jonathan Wiles, CET (913) 742-6292	<a href="mailto:jwiles@cityofshawnee.org">jwiles@cityofshawnee.org</a>
520	Platte County, MO Gale Cantu, C.B.I. (816) 858-3380	<a href="mailto:GCANTU@co.platte.mo.us">GCANTU@co.platte.mo.us</a>
530	City of St. Charles, MO Ellie Marr (636) 949-7900 x7235	<a href="mailto:EMarr@sccmo.org">EMarr@sccmo.org</a>
540	City of Lawrence Matt Bond, P.E., CFM (785) 832-3142	<a href="mailto:mbond@lawrenceks.org">mbond@lawrenceks.org</a>
610	City of Overland Park Pam Fortun, P.E. CFM (913) 895-6054	<a href="mailto:Pam.Fortun@opkansas.org">Pam.Fortun@opkansas.org</a>
620	Ben Higgins, City of Lincoln (402) 441 – 7589	<a href="mailto:watershed@lincoln.ne.gov">watershed@lincoln.ne.gov</a>
630	Contact your State Dam Safety Coordinator for element SDS	

## Additional Training Opportunities

- [CRS Resources – Webinars](#)
- [Association of State Floodplain Managers](#)
- [H2O Partners - webinars](#)